



# STAINLESS STEEL MOBILE SHOWER COMMODES

Attendant Propelled | Self Propelled | Tilt and Recline

## USER MANUAL



Thank you for choosing this Stainless Steel Commode from our Aspire Mobile Shower Commode Range.

This product has been specifically designed to offer comfort, support and safety.

**It is important that you read this user manual carefully before using your new shower commode.**



This product features the CE mark, in compliance with the Medical Devices Regulation 2002 (as amended) Class I, and the Medical Device Regulation 2017/745



This product features the UKCA mark, in compliance with Part II UK MDR 2002 (as amended) Class I

© Aidacare Pty Ltd 2024

No part of this user manual may be copied, distributed, reproduced, scanned or stored on any electronic database, whether in whole or in part in any form or by any means.

Due care has been taken to ensure all the information contained in this user manual is correct at the time of printing. All measurements, pictures, colours and weight capacities are to be used as a guide only. We reserve the right to modify the design or appearance of any product displayed in this user manual without prior notice.

## TABLE OF CONTENTS

---

1. Symbols Used in this Manual	4
2. Symbols Used on the Product	5
3. Introduction	6
4. Safety Precautions/Warnings	6
5. Product Overview	9
6. Unpacking & Inspection	12
7. Assembly Instructions	16
8. Operation	22
9. Accessories	26
10. Troubleshooting	27
11. Cleaning	27
12. Service & Maintenance	28
13. Specifications	29
14. Compliance	30
15. Warranty	30
16. Manufacturer, EU Representative & Importer Details	31

# 1. SYMBOLS USED IN THIS MANUAL

The symbols below are used throughout this user manual and on the product to identify warnings and important information. It is very important for you to read them and understand them completely



**WARNING**

**WARNING!** Indicates a potentially hazardous condition/situation. Failure to follow designated procedures can cause either personal injury, component damage or malfunction. On the product, this icon is represented as a black symbol on a white triangle with a black border.



**ALWAYS!** These actions should be performed as specified. Failure to perform mandatory actions can cause personal injury and/or equipment damage. On the product, this icon is represented as a white infinity symbol on a black dot with a white border.



**DO NOT!** These actions are prohibited. These actions should not be performed at any time or in any circumstances. Performing a prohibited action can cause personal injury and/or equipment damage. On the product, this icon is represented as a white symbol with a black circle and black slash.

# 2. SYMBOLS USED ON THE PRODUCT

Sticker shown below is a sample, product specifics will change per item type.



Product Code



Safe Working Load



Serial Number



Read User Manual



Importer



Caution



Country of Manufacture



Medical Device



UKCA Mark



Authorised Representative in EU



CE Mark

## 3. INTRODUCTION

---

The Aspire Mobile Shower Commode range is designed for healthcare environments such as facilities or hospitals. The commodes have a fabricated stainless steel frame and utilize plastic and PU components with various material specifications.

### 3.1 CLINICAL APPLICATIONS AND AREA OF USE

These commodes are appropriate for adult patient care and should only be used under the instruction of a carer or health professional where concerns exist around patient use.

### 3.2 KEY FEATURES

- Maximum Safe Working Load (SWL) of 200kg/31.5st or 400kg/63st (dependent on model)
- Attendant propelled and self propelled options available
- Height adjustability to accommodate different users (TIS model only)
- Stainless steel finish
- Swing back safety arms for ease of cleaning and transfer
- Soft PU seat range in open or closed variations (sold separately)
- Easy slide weight bearing platform or swing away legrest options available
- Access trough with improved over toilet clearance for easy hygiene access
- -8° – 18° angle adjustable backrest for improved seating comfort (swing away models only)
- Angle adjustable backrest for improved seating comfort
- Ultra low seat height of 590mm or down to 490mm when customised (swing away models only)

## 4. SAFETY PRECAUTIONS/WARNINGS

---

It is important that this User Manual is read in its entirety prior to using the commode. The manual is designed to ensure that users are equipped with the information required to competently and responsibly operate this commode.

It is recommended that the User Manual be kept in an easily accessible place for quick reference. If required, Aidacare product specialists can provide additional training.

All warnings and cautions within this manual should be strictly adhered to. Failure to do so could result in harm to the patient or operator.



**WARNINGS** highlighted throughout this manual identify possible hazards in procedures or conditions which if not followed correctly could result in serious injury or fatality.



**CAUTIONS** highlighted throughout this manual identify possible hazards in procedures or conditions, which if not followed correctly could result in equipment damage or failure.

### INTENDED USE

This product is specifically designed for individuals who, due to a wide variety of reasons, have limited mobility or require assistance when toileting and bathing. This product should be used as a tool to assist such users, with the guidance of a trained healthcare professional or care worker.

The clinically qualified person responsible should consider the age, size and condition of the user before using the commode.

The maximum user weight is 200kg / 31.5st or 400kg / 63st depending on the model chosen.

**Attendant Propelled** Mobile Shower Commodes are able to be propelled by an attendant with the push handle located on the top of the backrest. This Mobile Shower Commode is designed for indoor use **ONLY** and should **NOT** be used outdoors under any circumstances. This product is suitable for **INDOOR** wet areas such as bathrooms and showers but is **NOT** suitable for use within or around pools.

**Self Propelled** Mobile Shower Commodes are able to be propelled by a user with the self propelling wheels or by attendant with the push handle located on the top of the backrest. This Mobile Shower Commode is designed for indoor use **ONLY** and should **NOT** be used outdoors under any circumstances. This product is suitable for **INDOOR** wet areas such as bathrooms and showers but is **NOT** suitable for use within or around pools.



**WARNING!** Swing Away Footplate models are not intended to bear the weight of an occupant through its footplates. **DO NOT** stand on the footplates under any circumstances.



**ALWAYS** check with your healthcare professional prior to using this commode.



**ALWAYS** apply the brakes when the commode is stationary.



**ALWAYS** ensure brakes remain locked when transferring into or out of the commode.



**ALWAYS** ensure that the legrests are swing away when transferring into and out of the commode (swing away models only).



**ALWAYS** ensure that attendant and patient limbs are free from potential entrapment areas before operating any functions.



**DO NOT** stand on the product.



**DO NOT** use outdoors.



**DO NOT** use this product without reading the user manual in its entirety.



**DO NOT** use if defective.



**DO NOT** make any changes or modifications to this product without consultation from Aidacare.

## 5. PRODUCT OVERVIEW

The Aspire Mobile Shower Commode range is designed specifically for Care and Hospital environments. Please take the time to familiarize yourself with the key components shown below:

### 5.1 SWING AWAY LEGREST MODELS



## 5.2 WEIGHT BEARING PLATFORM MODELS



## 5.3 TILT & RECLINE MODELS



## 6. UNPACKING & INSPECTION

Aspire Mobile Shower Commodes are packaged in a single box for maximum protection. Please check the box to ensure no components are missing, and contact Aidacare if necessary.

### 6.1 SWING AWAY LEGREST MODELS

#### IN CARTON



Commode frame with backrest, safety arms, locking castors



Swing away legrests (pair)



User manual (in plastic bag)



Seat mounting hardware (in plastic bag)

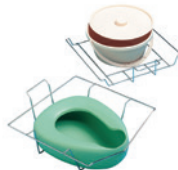
#### SOLD SEPARATELY



Open or closed seat



Pan carrier



Commode bowl/bed pan

### 6.2 WEIGHT BEARING PLATFORM MODELS

#### IN CARTON



Commode frame with backrest, safety arms, locking castors



User manual (in plastic bag)

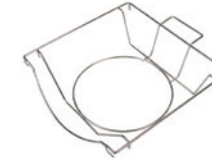


Seat mounting hardware (in plastic bag)

#### SOLD SEPARATELY



Open or closed seat



Pan carrier



Commode bowl/bed pan



## 6.3 TILT & RECLINE MODELS

### IN CARTON



Commode frame with backrest, safety arms, locking castors



Swing away legrests (pair)



User manual (in plastic bag)



Seat mounting hardware (in plastic bag)

### SOLD SEPARATELY



Open or closed seat



Pan carrier



Commode bowl/bed pan

## 6.4 SELF PROPELLING MODELS

### IN CARTON



Commode frame with backrest, safety arms, locking castors



Swing away legrests (pair)



Seat mounting hardware (in plastic bag)



User manual (in plastic bag)



Self propelling kit (wheels, brakes and anti-tippers)

### SOLD SEPARATELY



Open or closed seat



Pan carrier



Commode bowl/bed pan



## 7. ASSEMBLY INSTRUCTIONS

### 7.1 SWING AWAY LEGREST MODELS

#### Step 1

Remove the commode from the box and clear away all packaging materials.



#### Step 2

Detach screws that are fitted into the backrest, swing arms, and backrest, position them, and secure them in place with screws.



#### Step 3

Attach the legrests into the lugs mounted on the commode frame **1** and tighten them with screws underneath the top lug. **2**



#### Step 4

Using seat mounting hardware, affix seat **3** (sold separately) to the top of the frame and screw it in place until tight. **4**



#### Step 5

Slide in the pan carrier and bowl (sold separately)..



#### Step 6

Check the castor pintles and retighten as needed.

Refer to section 12. Service & Maintenance for detailed instructions



**WARNING**

**WARNING!** The castors are fitted in place with expanding pintles which require re-tightening within 6 weeks of first use. Using 2 x Star Key wrenches, remove the wheels from their housings to gain access to the pintle bolt. Use a torque wrench to tighten bolt to 25-28Nm. **Do NOT exceed 28Nm.**



**WARNING**

**WARNING!** Castors should be inspected every six months and tightened if necessary.

### 7.2 WEIGHT BEARING PLATFORM MODELS

#### Step 1

Remove the commode from the box and clear away all packaging materials.



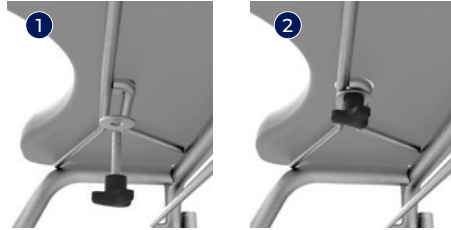
#### Step 2

Detach screws that are fitted into the backrest, swing arms, and backrest, position them, and secure them in place with screws.



### Step 3

Using seat mounting hardware, affix the seat ① (sold separately) to the top of the frame and screw it in place until tight ②.



### Step 4

Slide in the pan carrier and bowl (sold separately).



### Step 5

Check the castor pintles and retighten as needed.

Refer to section 12. Service & Maintenance for detailed instructions



**WARNING**

**WARNING!** The castors are fitted in place with expanding pintles which require re-tightening within 6 weeks of first use. Using 2 x Star Key wrenches, remove the wheels from their housings to gain access to the pintle bolt. Use a torque wrench to tighten bolt to 25-28Nm. **Do NOT exceed 28Nm.**



**WARNING**

**WARNING!** Castors should be inspected every six months and tightened if necessary.

## 7.3 TILT & RECLINE MODELS

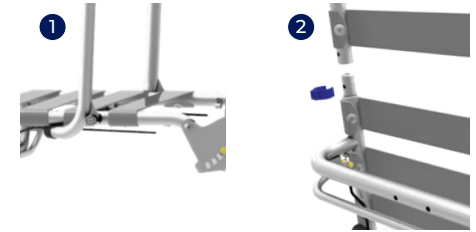
### Step 1

Remove the commode from the box and clear away all packaging materials.



### Step 2

Raise the backrest into the desired position ①; it will click into place when secure. Slide in the top frame and secure it with C clips. ②



### Step 3

Attach the legrests into the lugs mounted on the commode frame ③ and tighten them with screws underneath the top lug. ④



### Step 4

Using seat mounting hardware, affix seat ⑤ (sold separately) to the top of the frame and screw it in place until tight. ⑥



### Step 5

Slide in the pan carrier and bowl (sold separately).



## 7.4 SELF PROPELLING MODELS

### Step 1

Remove the commode from the box and clear away all packaging materials.



### Step 2

Detach screws that are fitted into the backrest, swing arms, and backrest, position them, and secure them in place with screws.



### Step 3

Attach the legrests into the lugs mounted on commode frame ① and tighten them with screws underneath the top lug ② (for swing-away legrest models only).



### Step 4

Using seat mounting hardware, affix seat ③ (sold separately) to the top of the frame and screw it in place until tight. ④



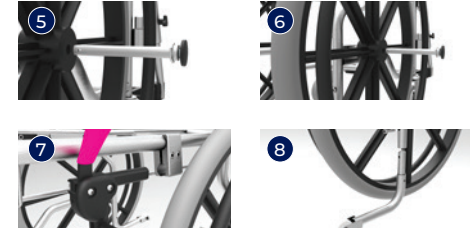
### Step 5

Slide in the pan carrier and bowl (sold separately).



### Step 6

Remove the locking pin from frame ⑤ insert it through the center of wheel ⑥, mount the brake with clamp onto each side of frame ⑦, detach the rear castors, and replace them with anti-tippers. ⑧



### Step 7

Check the castor pintles and retighten as needed.

Refer to section 12. Service & Maintenance for detailed instructions



**WARNING**

**WARNING!** The castors are fitted in place with expanding pintles which require re-tightening within 6 weeks of first use. Using 2 x Star Key wrenches, remove the wheels from their housings to gain access to the pintle bolt. Use a torque wrench to tighten bolt to 25-28Nm. **Do NOT exceed 28Nm.**



**WARNING**

**WARNING!** Castors should be inspected every six months and tightened if necessary.

## 8. OPERATION

### 8.1 SEAT INSTALLATION (SOLD SEPARATELY)

- 1 Place the seat onto the top of the frame and align it along guides .
- 2 Using the tri-wheel mounting kit (supplied with the commode), screw the tri-wheels firmly into place until the seat is secured onto the frame.

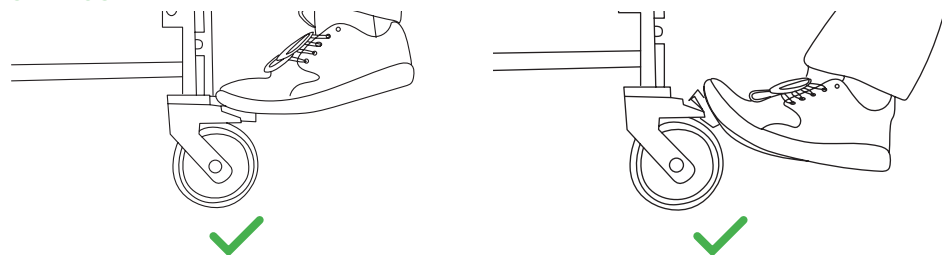


### 8.2 ACTIVATION OF THE CASTOR BRAKE – FOR ATTENDANT-PROPELLED MODELS

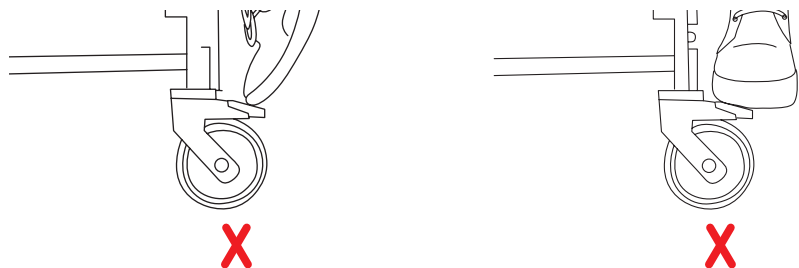
- 1 To engage, push the lever down with your foot.
- 2 To disengage, push the top end of the lever with your foot.



#### SAFE USE



#### UNSAFE USE



**WARNING**

**WARNING!** Always lock and unlock break pedal with foot pressing straight down on locking pedal. Reposition castors before locking or unlocking if necessary



**DO NOT** lock or unlock pedal by kicking or similar actions



**DO NOT** lock or unlock pedal by pressing down with pedals facing sideways to foot. Reposition castors if necessary



**DO NOT** lock or unlock pedal by kicking or similar actions



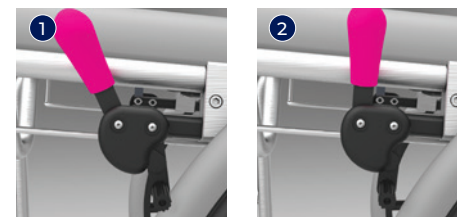
**DO NOT** lock or unlock pedal by pressing down with pedals facing sideways to foot. Reposition castors if necessary



**ALWAYS** lock and unlock break pedal with foot pressing straight down on locking pedal. Reposition castors before locking or unlocking if necessary

### 8.3 ACTIVATION OF THE HAND BRAKES – FOR SELF-PROPELLED MODELS

- 1 Push down and forward on the black hand levers on both sides of the commode to lock the rear wheels in place.
- 2 Pull back on the hand lever to disengage the brakes.





## 8.4 LEGREST ADJUSTMENT

(SWING AWAY LEGREST MODELS ONLY)

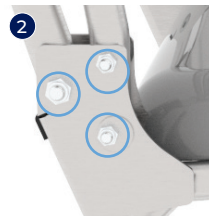
- 1 Lift and swing the legrests to the desired position 1.
- 2 If the user wishes to vacate the chair, swing the footrests outwards for clearance. They can be completely removed by removing the locking screw and lifting upwards. 2



## 8.5 BACKREST ANGLE ADJUSTMENT

(ALL MODELS EXCEPT 600MM WEIGHT BEARING AND 460/530MM TIS)

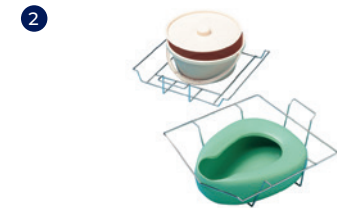
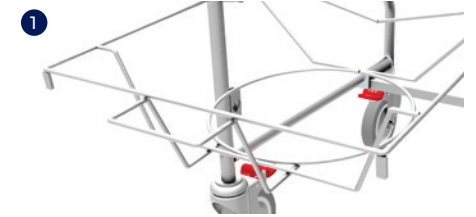
- 1 Backrest adjustment is facilitated by repositioning the offset washer, located on the plate that connects the backrest to the seating support. There is a 10° angle adjustment available (8° or 18°).
- 2 Using a 5mm Allen key and 10mm shift lever, loosen two bolts on either side of the commode.
- 3 Rotate the offset washer on either side of the commode, adjust the backrest to the desired position, and lock it in place on either side of the commode.



## 8.6 PAN CARRIER & BED PAN INSTALLATION

(SOLD SEPARATELY)

- 1 Holding the handle of the pan carrier, insert the front end into the mounting rails at the rear of the commode.
- 2 Place the commode bowl or pan into the pan carrier before sliding the pan carrier underneath the seat.



## 8.7 USING SAFETY ARMRESTS

Swing the armrests to the desired position and ensure the spring pin locks into place.



## 9. ACCESSORIES



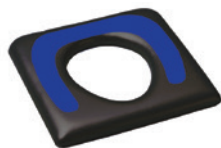
**Open Seat**

BTC066600 – 460mm  
BTC066750 – 530mm  
BTC066800 – 600mm



**Closed Seat**

BTC066700 – 460mm



**Hand Made Pressure Reducing Seat – 460mm**

Multiple sizes available, refer to brochure for more details



**Commode Bowl Carrier**

BTC066400



**Oxygen Bottle Carrier**

BTC067200



**Armrest – Padded Offset**

BTC067000



**Commode Bowl and Bed Pan**

BTC081610 – Bowl and Lid  
BTT151800 – Bed Pan



**Adjustable Pelvic Strap**

BTC067100



**Self Propelling Conversion Kit**

BTC082900



**Elevating Legrests**

BTC067110 – Left  
BTC067115 – Right



**Adjustable Thoracic Support**

WCA867010



**Advanced Headrest**

BTC067050



**Stump Support**

BTC067105



**Adjustable IV Pole**

BTC067103

## 10. TROUBLESHOOTING

Fault	Cause	Solution
Difficulty in removing/adjusting footrests	Build up of material in receivers	Remove footrests, clean receivers and footrest mounts
Difficulty adjusting the seat height	Build up of material in seat frame adjustment point	Remove upper from lower frame and clean thoroughly
Difficulty in maneuvering castors	Build up of dirt between fork and castor	Clean castors thoroughly
Difficulty in adjusting commode seat	Build up of material between frame and seat	Remove seat and clean thoroughly

Please contact **Aidacare** if problems persist.

## 11. CLEANING



**WARNING**

**WARNING!** It is strongly recommended to use protective clothing when cleaning.

- **Frame and metal components** – For greater comfort and long-lasting performance, always keep the commode clean. Clean stainless steel components with water and a mild detergent, then wipe dry.
- **Brakes** – The braking effect depends on the condition of the tyre tread. Excessive dirt build-up may negatively affect the brakes' performance. If necessary, clean the tyres with a small brush to remove dust and debris.
- **Seat and backrest padding** – Easy clean material that can be washed with water and neutral soap/detergent.
- **Commode Bowl** – Remove and clean with water and a neutral soap/detergent.



**CAUTION**

**CAUTION** Do not use abrasive Hypocarbonate or Phenolic compounds or pads.

## 12. SERVICE & MAINTENANCE

To prolong the working life of the commode and ensure trouble-free operation, it is recommended that routine inspections be performed by a person who is suitably qualified and well acquainted with the design, use, and care of Aspire Mobile Shower Commodes.

If an inspection reveals that the safety of the commode is compromised in any way, it should be immediately withdrawn from service, tagged as such, and the owner notified until repair or replacement has occurred.

### INSPECTION

A visual and functional inspection should be performed **monthly** and every time the commode changes user.

- **Mechanical components** – Visually inspect for any damage, chips, or deformation to the frame, armrests, seat, backrest, legrests, or commode bowl.
- **Castors, wheels, and brakes** – Check if they are functioning as they should.
- **Frame securement hand wheels** – Ensure all are present and tightened.

### CASTOR TIGHTENING

Castors fitted with expanding pintles (all shower commodes other than Tilt & Recline) should be checked using a torque wrench every six months to ensure they remain tightly secured to the commode frame.

#### To tighten castor pintles

Using 2 x Star Key wrenches, remove the wheels from their housings to gain access to the pintle bolt. Use a torque wrench to tighten bolt to 25-28Nm.

**Do NOT exceed 28Nm.**



1. Remove the castor



2. End of the pintle bolt is an 8mm hexagonal bolt head



3. Use a torque wrench to tighten the pintle bolt to 25-28Nm

## 13. SPECIFICATIONS

	Seat Width mm inches	Overall Width mm inches	Overall Height mm inches	Backrest Height mm inches	Armrest Height mm inches	Anterior Seat Height mm inches	Posterior Seat Height mm inches	SWL kg stone
BTC066000 Attendant Propelled – WB Platform	460 18	535 21	995 39	305 12	225 9	590 23	560 22	200 31.5
BTC066200 Self Propelled – WB Platform	460 18	665 26.2	995 39	305 12	225 9	590 23	560 22	200 31.5
BTC066050 Attendant Propelled – WB Platform	530 21	605 24	995 39	305 12	225 9	590 23	560 22	200 31.5
BTC066055 Self Propelled – WB Platform	530 21	735 29	995 39	305 12	225 9	590 23	560 22	200 31.5
BTC061400 Attendant Propelled – WB Platform	600 24	725 28.5	995 39	300 12	290 11.5	590 23	560 22	400 63
BTC065900 Attendant Propelled – Swing Away Footrests	460 18	535 21	895–995 35–39	305 12	225 9	490–590 19–23	560 22	200 31.5
BTC066100 Self Propelled – Swing Away Footrests	460 18	665 26.2	895–995 35–39	305 12	225 9	490–590 19–23	560 22	200 31.5
BTC061300 Attendant Propelled – Swing Away Footrests	600 24	675 26.5	995 39	305 12	225 9	490–590 19–23	560 22	200 31.5
BTC061305 Self Propelled – Swing Away Footrests	600 24	805 32	995 39	305 12	225 9	490–590 19–23	560 22	200 31.5
BTC066030 Attendant Propelled – Tilt & Recline	460 18	560 22	1315–1485 52–58	900 35.5	275 11	460–630 18–25	460–620 18–24.5	250 39
BTC066040 Attendant Propelled – Tilt & Recline	530 21	630 25	1315–1485 52–58	900 35.5	275 11	460–630 18–25	460–620 18–24.5	250 39
BTC066060 Attendant Propelled – Swing Away	530 21	605 24	995 39	305 12	225 9	490–590 19–23	460–560 22	200 31.5
BTC066065 Self Propelled – Swing Away	530 21	735 29	995 39	305 12	225 9	490–590 19–23	460–560 22	200 31.5

\*Swing away model are only adjustable when customised



## 14. COMPLIANCE

---

This range of Commodes is manufactured in ISO-compliant production facilities in PR China, adhering to strict quality control standards.

Aspire Commodes are manufactured and independently tested to meet the market-relevant compliance standards.

Labels addressing compliance requirements are affixed to the commodes. Users should familiarise themselves with these labels prior to use.

## 15. WARRANTY

---

**5 YEARS WARRANTY**  
Frame

**1 YEAR LIMITED WARRANTY**

Aspire Mobile Shower Commodes come with a five-year corrosion resistance warranty on the external frame surface. If the product surface becomes damaged, this will void the warranty. A general one-year warranty also applies, covering faulty workmanship or defective materials. This warranty is valid for twelve months from the original purchase date, and applies to the original customer.

**Aidacare** does not warrant against faults caused by incorrect use, unauthorised modification, or any situation that could not be deemed as fair wear and tear. The warranty on this product is a back-to-base warranty and does not cover any freight costs pertaining to the return of any items under warranty. For further information, please contact **Aidacare**.

**Aidacare** will not guarantee the safety and the correct functioning of the product in the case that any of the original components have been changed, modified, or replaced with non-original Aspire approved parts. If any faults are detected upon receiving the product, please phone **Aidacare** to arrange a replacement. Any faults that are detected during normal use should be reported to **Aidacare** immediately to determine if warranty conditions apply and organise repair and/or replacement as applicable.

For servicing, preventative maintenance, and any other questions regarding this or any other **Aidacare** product, please contact **Aidacare**.

A spare parts list is available on request.

## 16. MANUFACTURER, UK REPRESENTATIVE & IMPORTER DETAILS

---

If you have any questions, you can contact:



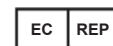
### Manufacturer:

**Aidacare Pty Ltd**

ABN 40 134 398 833

Building 3A, 1 Moorebank Avenue,  
Moorebank NSW 2170  
Australia

1300 133 120 | [product@aidacare.com.au](mailto:product@aidacare.com.au)



### EU Representative:

**European Device Solutions (Ireland) Ltd**

Stratton House, Bishopstown Road,  
Cork T12 Y9TC Ireland  
[info@europeandevicesolutions.eu](mailto:info@europeandevicesolutions.eu)



### Importer:

**Aidacare Ltd**

Registration 13785408

Arcadia House, Maritime Walk, Ocean Village,  
Southampton SO14 3TL United Kingdom

01622 541235 | [info@aidacare.co.uk](mailto:info@aidacare.co.uk)

**AIDACARE PTY LTD**

Building 3A, 1 Moorebank Avenue,  
Moorebank NSW 2170  
Australia

**1300 133 120** | [aidacare.com.au](http://aidacare.com.au)

**AIDACARE LIMITED**

Arcadia House, Maritime Walk,  
Ocean Village, Southampton SO14 3TL  
United Kingdom

**01622 541235** | [aidacare.co.uk](http://aidacare.co.uk)

MADE IN PRC

ASUM22.48 281024

